



DUC Diving B.V.

Footprint 2025 Scope 1 & 2

(ton CO₂ / Million Euro)

Explanation scopes

Scope 1:

Direct emissions caused by own sources within the organization such as car fuel, gas bottle usage.

Scope 2:

Indirect emissions through use within the organization, but which are generated elsewhere, such as electricity.

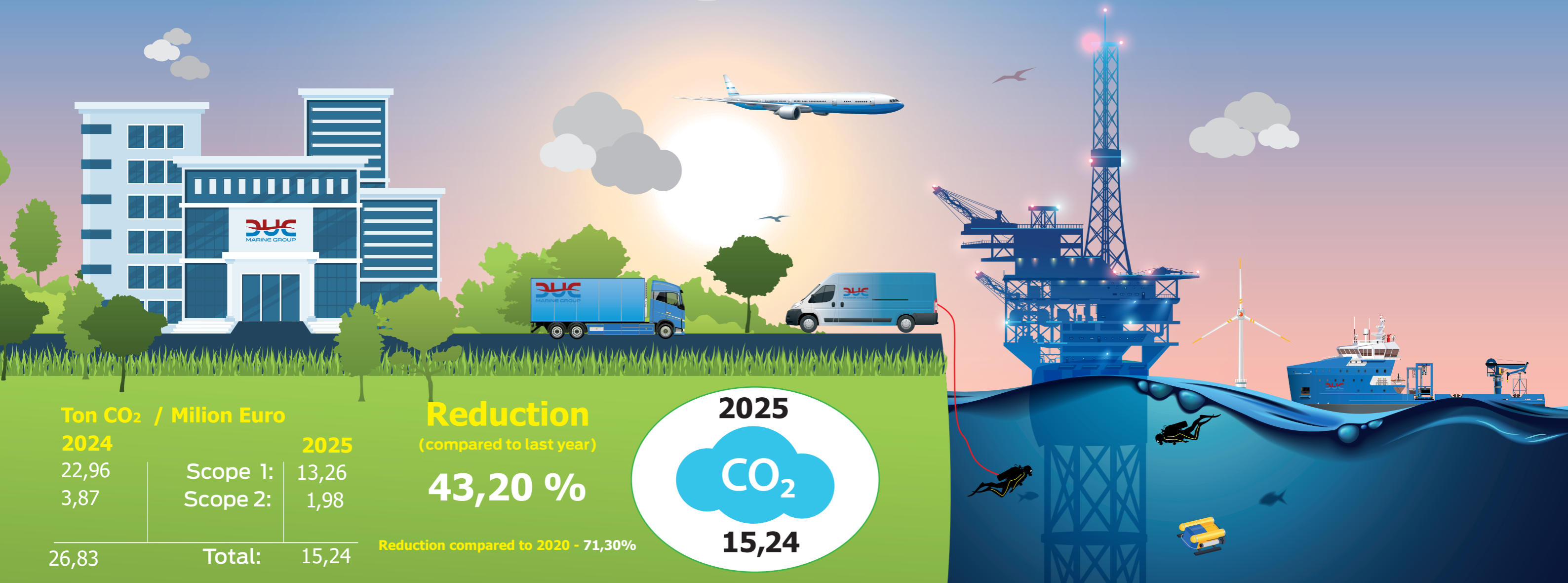
What we do to improve our CO₂ footprint:

- Actively stimulate economical driving behaviour
- Use of 100% LED
- Increase zero-emission vehicle park to 40% by 2030
- Use of digital forms
- Cutting down on single use plastics
- Reduce and separate garbage
- 90% cloud-based services
- 50% renewable energy powers all company halls
- Changed our long term goal for 2030 from 55% to 80% (relative to 2020)

Office

Logistics

Activities



Ton CO₂ / Milion Euro

2024		2025
22,96	Scope 1:	13,26
3,87	Scope 2:	1,98
26,83	Total:	15,24

Reduction

(compared to last year)

43,20 %

Reduction compared to 2020 - 71,30%

2025

CO₂

15,24