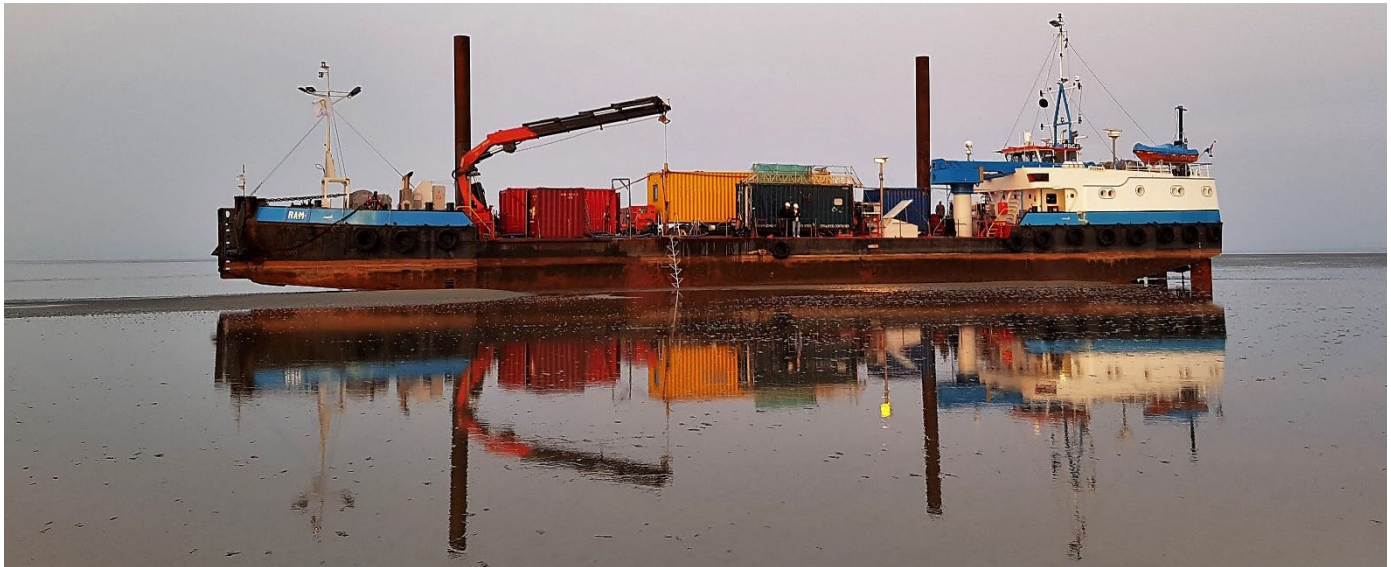




"RAM"



**GENERAL**

Description: Multi-Purpose Support Vessel  
 Flag: Dutch  
 Call sign: PBCJ  
 IMO Number: 8937259  
 MMSI Number: 244620291  
 Class: RINA 30 miles offshore - Rhine-certificate  
 Range: 3000 Nautical miles  
 Rebuilt: 2009  
 Speed: 9 Knots

**DIMENSION**

Length: 57,00 m  
 Width: 09,50 m  
 Draft: 01,30 / 01,80 m  
 GT: 417 GT

**TANK CAPACITIES**

Ballast water: 315.890 ltr  
 Drinking water: 18.000 ltr  
 Fuel capacity: 37.500 ltr (with transfer capability)

**PROPULSION SYSTEM**

Main engine: 2 x 300 HP CAT  
 Bow thruster: 150 HP

**DECK LAYOUT**

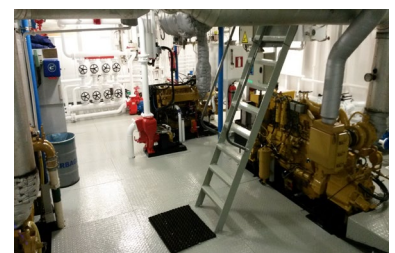
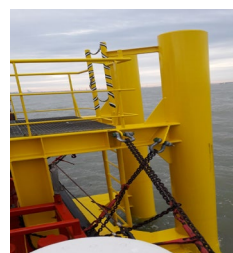
Telescopic crane: Luna: 19 ton @ 3 m  
 0,7 ton @ 18,3 m  
 Knuckle boom crane: Fassi: 30 ton @ 4 m  
 2,2 ton @ 26,8 m  
 radiographic controlled  
 Mooring system: 4-point mooring system, fitted with 4x450 m  
 28 mm steel wire ropes and 4x 1.500 kg  
 Delta flippers  
 Moon pool: Ø 800 mm  
 Free deck space: 250 m<sup>2</sup>  
 Deck load: 6 ton / m<sup>2</sup>

**ACCOMMODATION**

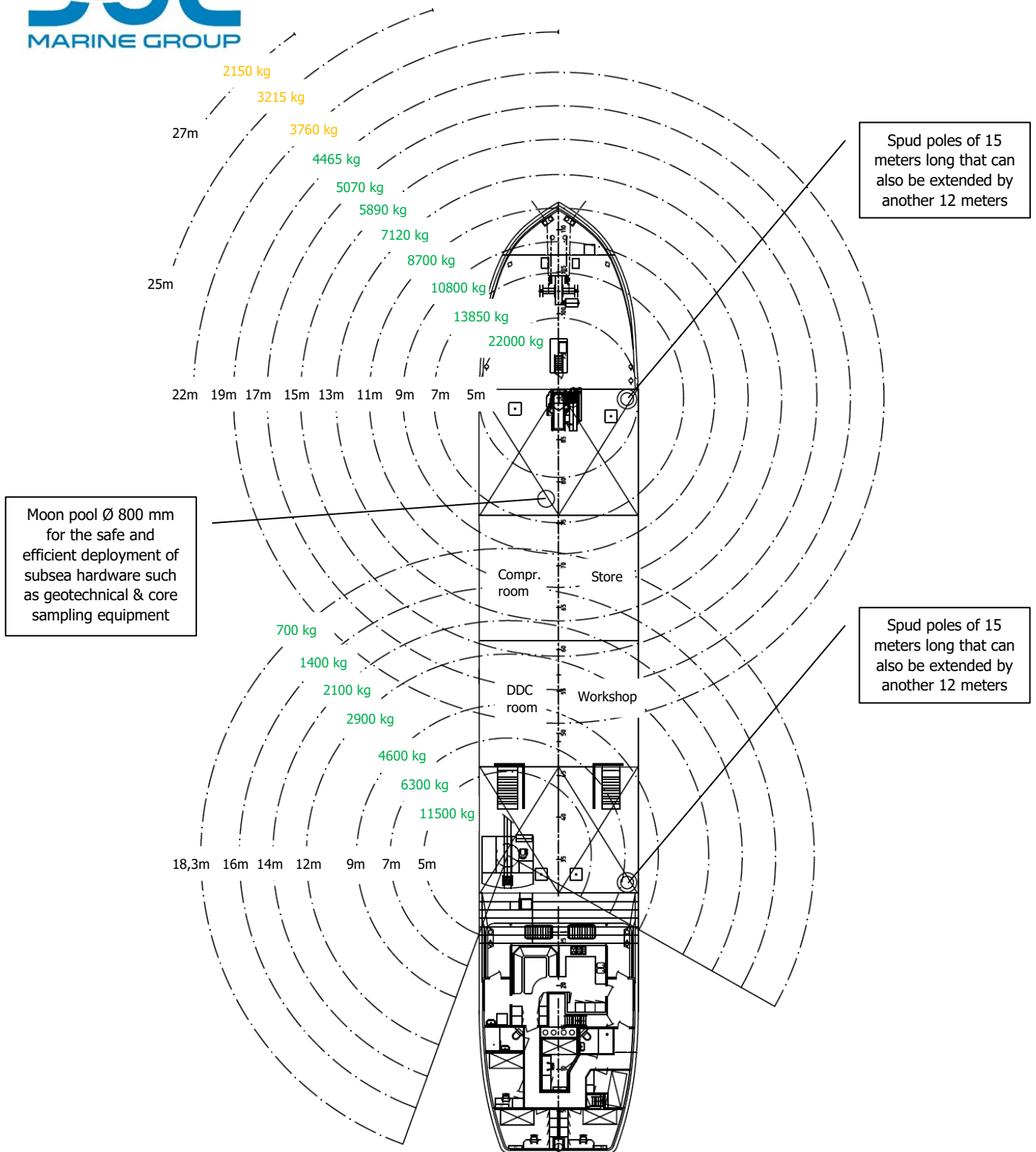
Day accommodation: Max. 17 persons  
 Berths: 5 cabins, 4 x 2 + 1 x 1 bed.  
 TLQ for 4 persons optional

**AUXILIARY EQUIPMENT**

Generator(s): 1x 150 kVa - 1x 97 kVa  
 Spud pole (optional): 1x 9 m + 1x 6 m (on request till 27 m),  
 hydraulic winches operated from bridge  
 Main anchors: 2x 585 kg HHP anchor, chain 110 m  
 Navi. Equipment: 4x Sailor VHF (1x DSC), magnetic  
 compass, satellite compass (3-point),  
 Navtex, Auto-Pilot, 2x Radar, 1x multi-  
 frequency GNSS receiver (accuracy  
 centimeter-level), DGPS, navigation  
 computer, survey computer TimeZero with  
 PBG module incl. 3d cube (optional), AIS,  
 depth sounder, true or relative windmeter,  
 internet for each cabin  
 Diving support: Built-in Dive Decompression Chamber  
 (DDC), double lock, Lloyds certified  
 (meets IMCA requirements)  
 HP compressor 240 ltr / min @ 330 bar  
 HP airbank 12 x 50 ltr @ 330 bar  
 LP compressors 900 ltr / min + 1200 ltr /  
 min @ 15 bar



Although this leaflet has been compiled with the greatest possible care, neither DUC Marine Group nor the author accepts any liability for any incorrect information, its possible causes and possible consequences.



**The Vessel**

The Multi-Purpose Support Vessel "RAM" is a 57 meter long, 3- or 4-point mooring vessel with spuds (if required). In 2009 the Vessel was rebuilt on basis of our experience and according to specific client requests. She has been specifically set up and equipped for providing diving support, UXO clearance (shallow water) and core sample drilling for offshore and inshore works.