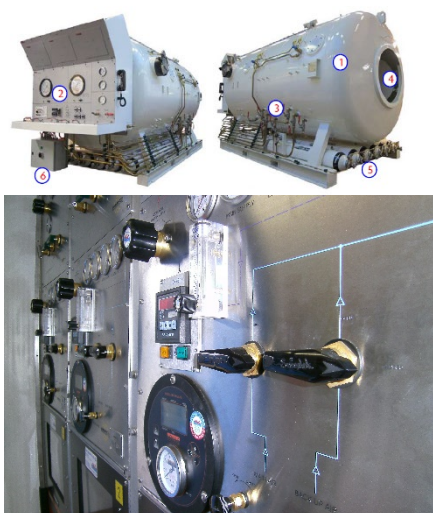




CONTAINERISED 1800 MM CHAMBER INCL. 3 DIVER PANEL



PHYSICAL DATA

Cert. authority: Lloyd's accordance European Standard EN 12079-1:2006 - Offshore Containers and DNV Rules 2.7-1:2006 - Offshore Containers

Max. gross weight: 11.000 kg
 Total weight: 10.750 kg
 Paint system: Hempel paint system (RAL 5015)
 External Length: 6058mm
 External Height: 2438mm
 External Width: 2438mm
 Access to roof top: Ladder/steps provided on the rear

BASIC FIT-OUT

Access: Water tight double lock door with non-opening window
 Floor: Fire retardant steel floor
 Thermal Insulation: Completely insulated with insulation panels except container main cargo doors.

ELECTRICAL FIT-OUT

Input: 1x external mounted 32AMP 5P 400V connector
 Plug Points: 4x European double plug points 230VAC
 Room lights: 2x double fluorescent light (IP65 and impact resistant) suspended from rubber mounts to prevent damage
 Emergency light: Half of light above working area fitted with emergency batteries up to 30min

INTERNAL FIT-OUT

Air Conditioning: Split-unit type with the evaporator situated internally and the condensing coil situated externally and suitable for heating and cooling
 Firefighting: 1x standard 6 kg foam Fire Extinguisher, 1x fire alarm mounted with siren
 Piping Systems: Tungum
 EBA: EBA set supplied with full face mask

EXTERNAL FIT-OUT

Air Quad: 16 Cylinder Air quad incl. hoses for back-up diving air conform IMCA guidelines during transport and general storage
 Security Covers: BIBS Exhaust, Main & Emergency Blow Down, Oxygen Supply, 1x LP supply inlet, 4x 300 Bar HP air supply inlet, 4x 200 Bar HP Nitrox supply inlet, 3x Diver gas outlet, 3x Pneumo outlet, 3x digital depth gauge connector, 3x diver communication connector, 3x diver light connector
 External terminations: 2x deck camera
 Deck Camera: 2x deck camera

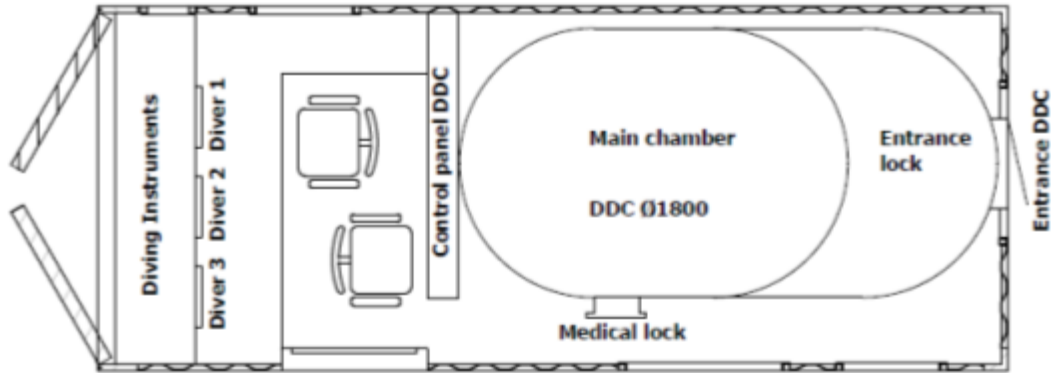
1800 MM CHAMBER SPECS.

Cert. authority: Lloyd's Register
 Maximum Depth: 5 Bar (6 bar absolute) = 50 meters of seawater
 Rating: 1800mm / 72"
 Chamber Diameter: 233mm / 10"
 Medical Lock: Volume entrance lock 2,4 M³, Volume main chamber 5,8 M³
 Volume: Main chamber 2 man laying down and 1 attendant
 Maximum Occupant Capacity:

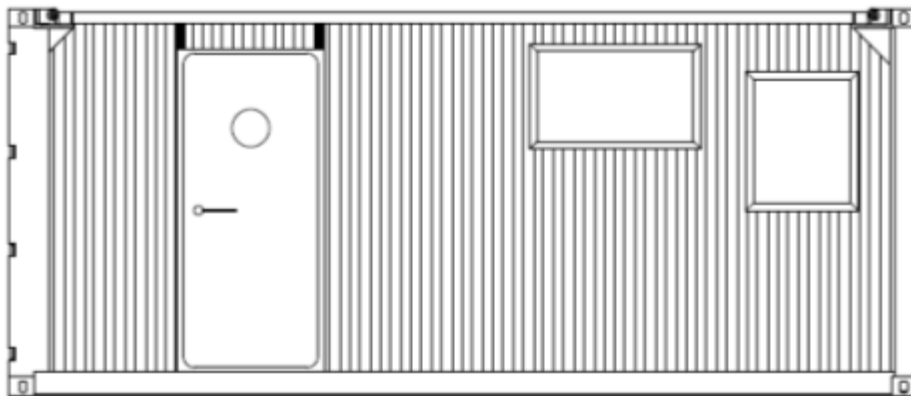
3 DIVER PANEL

Gas system: 3 diver Air panel with gas analyzers, 3 diver Nitrox panel with gas analyzers
 Depth gauges: 3x digital depth gauge, 3x backup depth gauge
 Video system: 3x 19" Diver radio with 4 channel Video recorder and light control, 10 hours battery life (comms only)
 UPS: Up to 1 hour

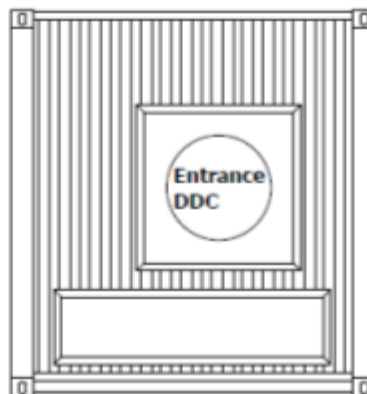
Although this leaflet has been compiled with the greatest possible care, neither DUC Marine Group nor the author accepts any liability for any incorrect information, its possible causes and possible consequences.



Topview



Side view



Front view

Although this leaflet has been compiled with the greatest possible care, neither DUC Marine Group nor the author accepts any liability for any incorrect information, its possible causes and possible consequences.