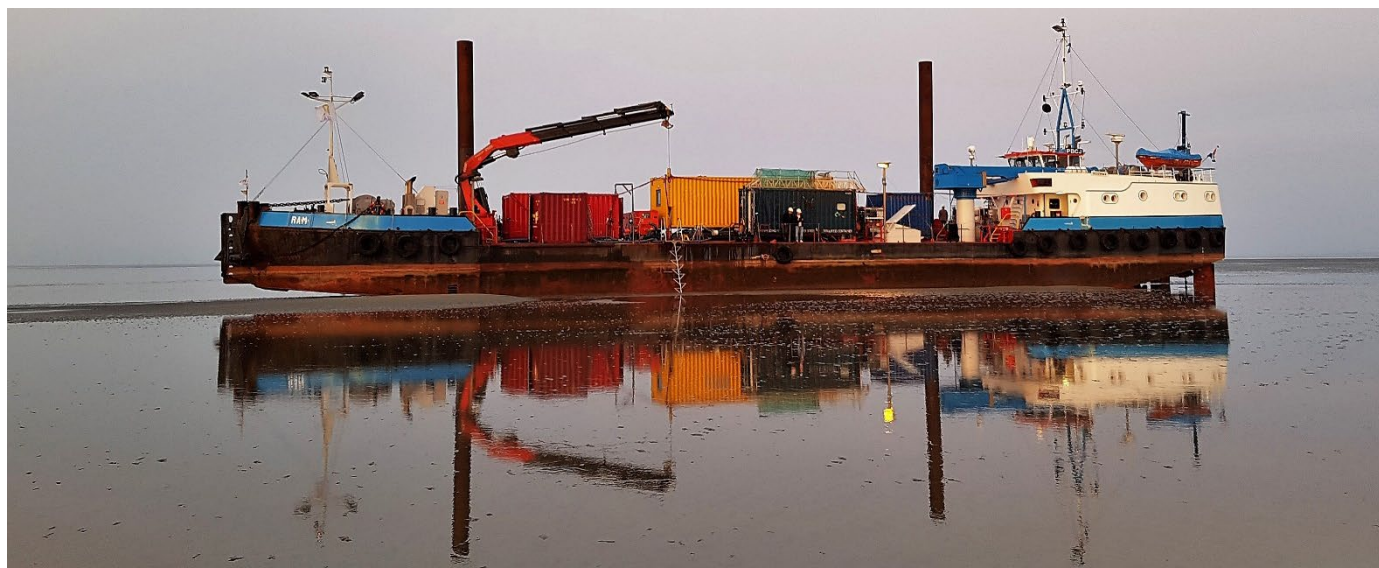




"RAM"



GENERAL

Description: Multi-Purpose Support Vessel
 Flag: Dutch
 Call sign: PBCJ
 IMO Number: 8937259
 Class: RINA 30 miles offshore - Rhine-certificate
 Range: 3000 Nautical miles
 Rebuilt: 2009
 Speed: 9 Knots

DIMENSION

Length: 57,00 m
 Width: 09,50 m
 Draft: 01,30 / 01,80 m
 GT: 417 GT

TANK CAPACITIES

Ballast water: 315.890 ltr
 Drinking water: 18.000 ltr
 Fuel capacity: 37.500 ltr (with transfer capability)

PROPULSION SYSTEM

Main engine: 2 x 300 HP CAT
 Bow thruster: 150 HP

DECK LAYOUT

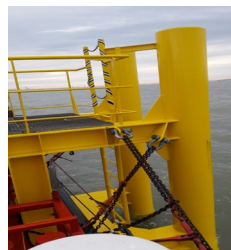
Telescopic crane: Luna: 19 ton @ 3 m
 0,7 ton @ 18,3 m
 Knuckle boom crane: Fassi: 30 ton @ 4 m
 2,2 ton @ 26,8 m
 radiographic controlled
 Mooring system: 4-point mooring system, fitted with 4x450 m
 28 mm steel wire ropes and 4x 1.500 kg
 Delta flippers
 Moon pool: Ø 800 mm
 Free deck space: 250 m²
 Deck load: 5 ton / m²

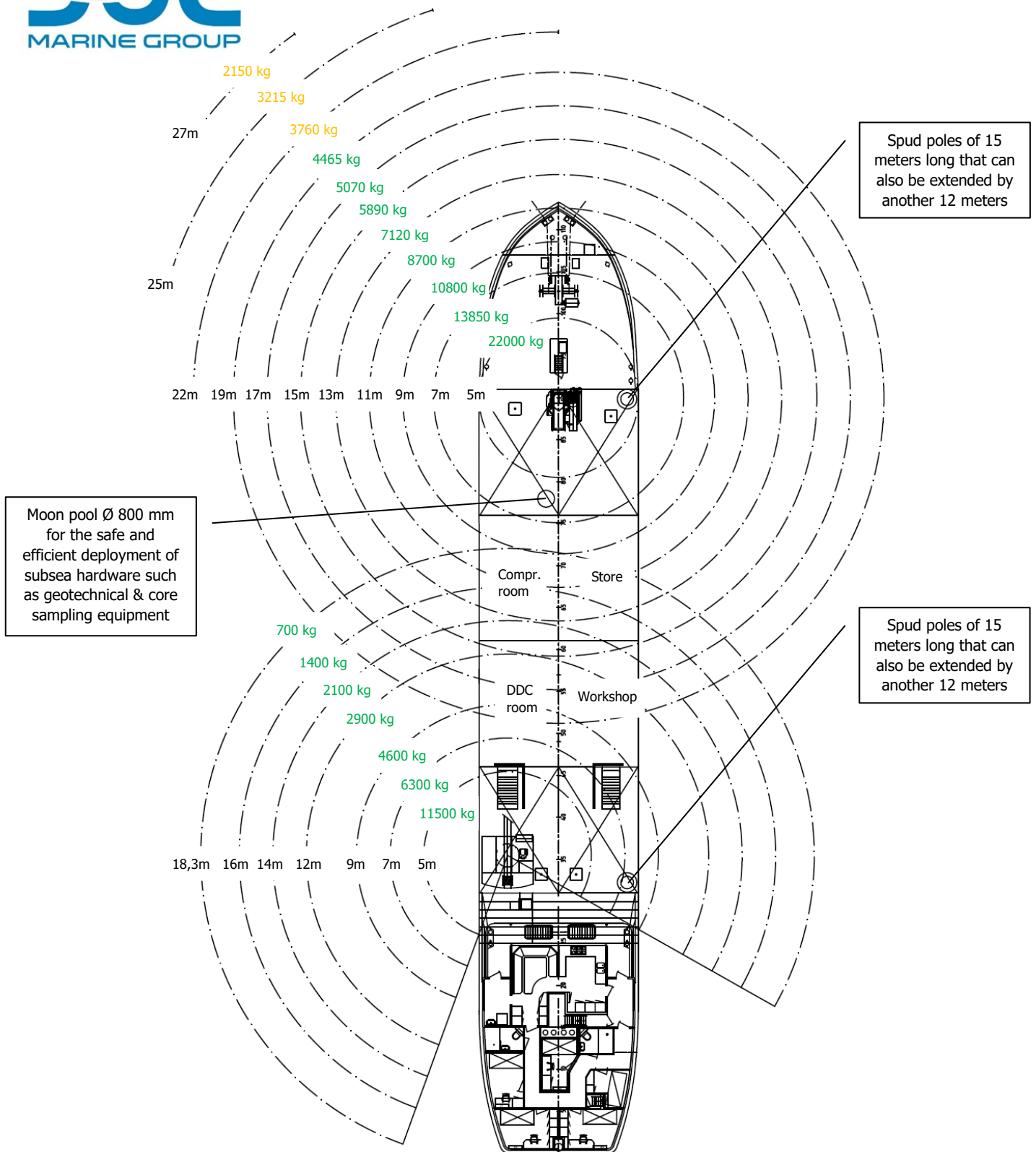
ACCOMMODATION

Day accommodation: Max. 17 persons
 Berths: 5 cabins, 4 x 2 + 1 x 1 bed.
 TLQ for 4 persons optional

AUXILIARY EQUIPMENT

Generator(s): 1x 150 kVa - 1x 97 kVa
 Spud pole (optional): 1x 9 m + 1x 6 m (on request till 27 m),
 hydraulic winches operated from bridge
 Main anchors: 2x 585 kg HHP anchor, chain 100 m
 Navi. Equipment: 4x Sailor VHF (1x DSC), magnetic
 compass, satellite compass (3-point),
 Navtex, Auto-Pilot, 2x Radar, 2x GPS,
 DGPS, navigation computer, survey
 computer (optional), AIS, depth sounder,
 windmeter, internet
 Diving support: Built-in Dive Decompression Chamber
 (DDC), double lock, Lloyds certified
 (meets IMCA requirements)
 HP compressor 240 ltr / min @ 330 bar
 HP airbank 12 x 50 ltr @ 330 bar
 LP compressors 900 ltr / min + 1200 ltr /
 min @ 15 bar
 LP airbank 500 ltr @ 15 bar
 Boat landing 185kN
 Boat landing (optional)





The Vessel

The Multi-Purpose Support Vessel "RAM" is a 57 meter long, 3- or 4-point mooring vessel with spuds (if required). In 2009 the Vessel was rebuilt on basis of our experience and according to specific client requests. She has been specifically set up and equipped for providing diving support, UXO clearance (shallow water) and core sample drilling for offshore and inshore works